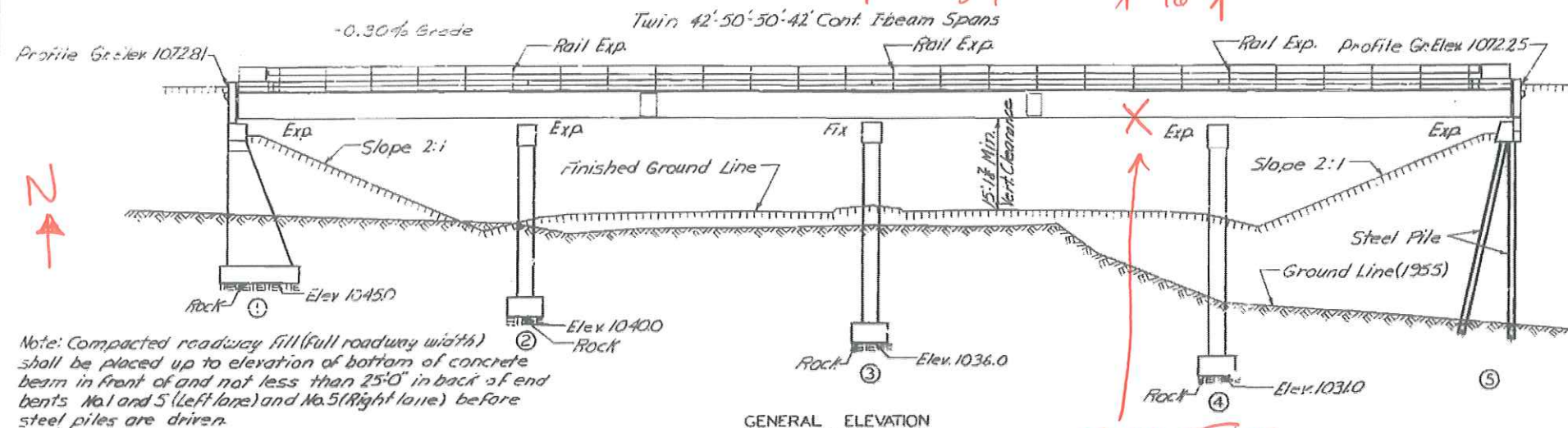


COLLISION DAMAGE
INSPECTION 6-13-2023

MISSOURI STATE HIGHWAY DEPARTMENT
IMPACT LOCATION
E. BT. 3 34' E. BT. 4 16'

FED. ROAD DIST. NO.	STA. 1/2	FED. AID PROJ. NO.	FISCAL YEAR	SHEET NO.	TOTAL SHEETS
5	NO.		19	100	



Note: All loose, shelly or disintegrated rock shall be removed and the footings placed on or into hard, solid, undisturbed rock. If soft rock or shale is encountered, the footings shall be carried at least 18" into and cast against vertical faces of same. Bearing of 10.5 tons/sq. ft. used in design.

All piling shall be 10" bearing piles at 42" and shall conform with details and notes on sheet No. 4 of design plans.

All steel pile required for this structure will be furnished by the State. (See Special Provisions)

All piles shall be driven to or into solid rock, boulders, shale, or cemented gravel; or to not less than full length authorized and to sustain a load of at least 370 ton per pile.

All piles shall be driven with a steam hammer.

GENERAL NOTES

Design Specifications: A.A.S.H.O. 1957
Loading: H20-516-44 (Modified 24,000 Tandem Axle) (15% future Wearing Surface)
Structural Steel Stress: 18,000%
Reinforcing Steel Stress: 20,000%
Concrete, Class "B" Stress: 1,200%
Concrete, Class "B1" Stress: 1,600%
Superstructure concrete shall be Class "B1" (air-entrained).
Substructure concrete shall be Class "B" (air-entrained).

Rivets 7/8" φ; holes 1 1/8" φ, except as noted.

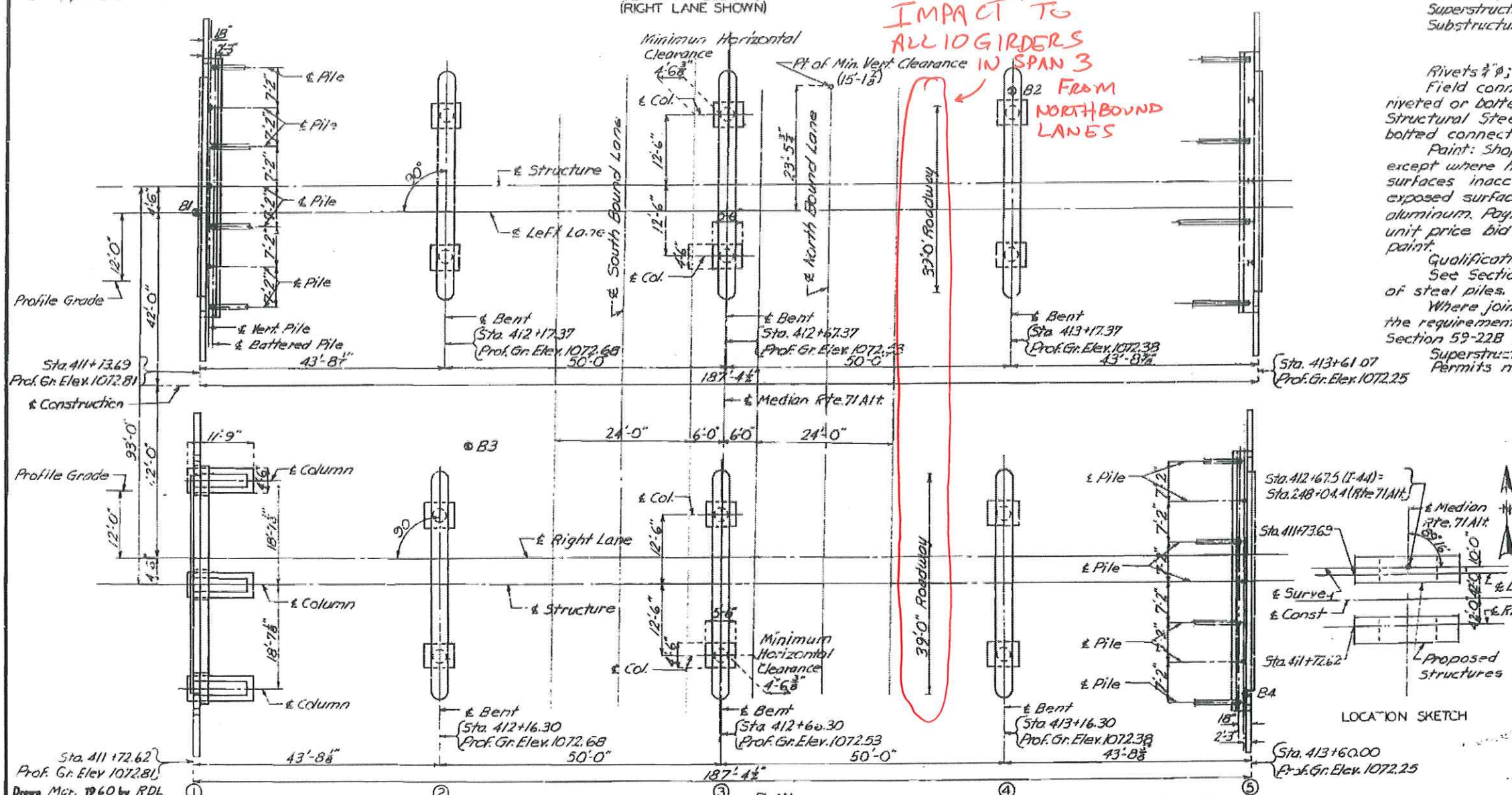
Field connections except as noted in handrail details may be riveted or bolted with high tensile bolts. Final pay weight for fabricated Structural Steel will be based on the use of field rivets except for bolted connections specified for handrail.

Paint: Shop, none; Field, contact surfaces of bolted field connections, except where high tensile bolts are used, one coat of red lead and surfaces inaccessible after erection three coats of red lead. All other exposed surfaces first coat red lead, second coat brown, third coat aluminum. Payment for cleaning and all painting will be made under unit price bid for painting. See Special Provisions for Aluminum paint.

Qualification of welding operators will be required. See Section 22-9C of Standard Specifications for required painting of steel piles.

Where joint filler is specified on the plans it shall conform with the requirements for Gray Rubber Compound Joints as given in Section 59-22B of the Standard Specifications.

Superstructure deck to be waterproofed. (See Special Provisions). Permits must be obtained for all trucks loads over legal lengths.



LOCATION SKETCH

B.M. 57 Elev. 1041.27 Center South Hdwl. Culv.
87 Lk. Sta. 414+98

BRIDGE OVER ROUTE 71 ALTERNATE

STATE ROAD FROM EAST OF SCOTLAND TO EAST OF FIDELITY
ABOUT 50 MILES SE. OF ATLAS

PROJECT NO. I-44-K18 (RTE I-44: STA. 411+72.62 (RT. LANE)
STA. 411+73.69 (LT. LANE)

JASPER COUNTY

DESIGNED BY R. A. Currie DATE 9-2-60
APPROVED BY R. M. Corliss DATE 9-2-60

STDC-110R7
A-630

Note: This drawing is not to scale. Follow dimensions.

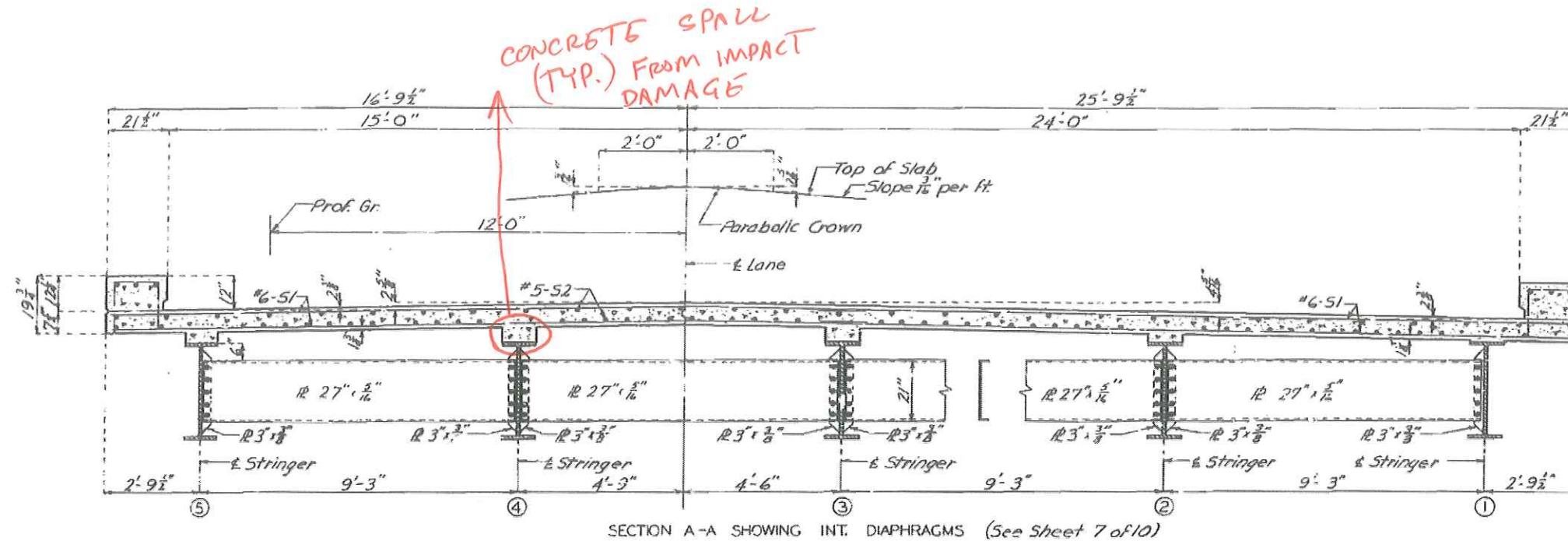
Note: Dimensions shown are horizontal dimensions Sheet No. 1 of 10

SEE PLAN 2, 3, 4, 5, 6, 7, 8, 9, 10

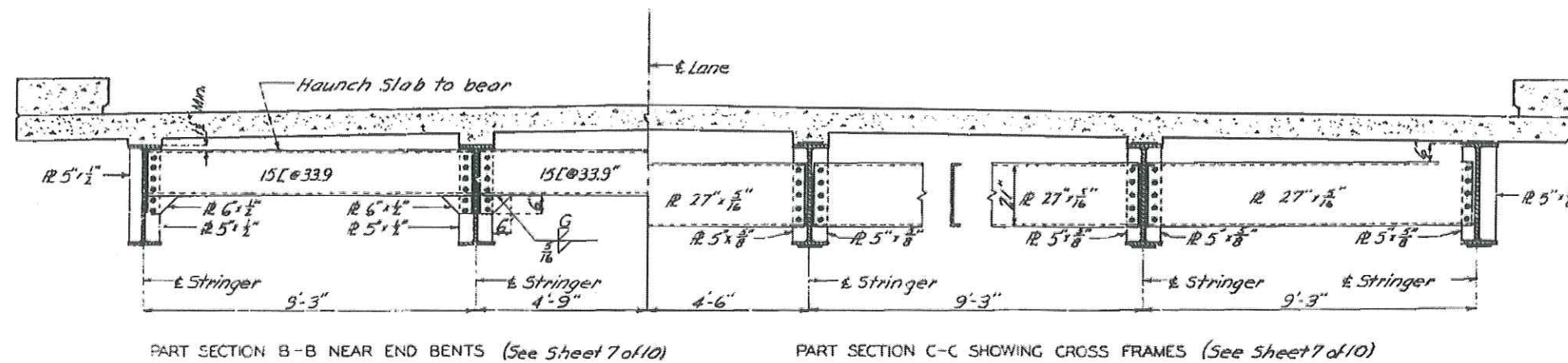
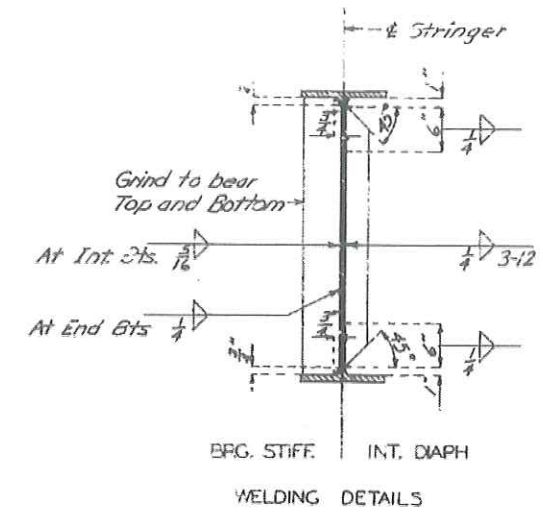
517

MISSOURI STATE HIGHWAY DEPARTMENT

FED. ROAD DIST. NO.	STATE	FED. AID PROJ. NO.	FISCAL YEAR	SHEET NO.	TOTAL SHEETS
5	MO.		19	107	



Note: Curbs to be cast independently of slab.
Slab to be constructed to a uniform depth of not less than 7 1/2" or, if desired, bottom of slab may be built on chords between top of haunches at stringers.
See Sheet 10 of 10 for details of curbs and handrail.



BRIDGE OVER ROUTE 71 ALTERNATE
STATE ROAD FROM EAST OF SCOTLAND TO EAST OF FIDELITY
ABOUT 5.0 MILES S.E. OF ATLAS
PROJECT NO. 1-44-103 (CITE I-44: STA. 411+72.62 (RT. LANE)
STA. 411+73.69 (LT. LANE))
JASPER COUNTY

Drawn Mar 1960 by RDL
Checked June 1960 by A.F.K.

Note: This drawing is not to scale. Follow dimensions.

Sheet No. 8 of 10

A-630

NO CONSTRUCTION VARIATIONS

524